



# DP Training



## Dynamic Positioning – Basic / Induction



### Duration

Five days

### Participants

Maximum eight

### Language

The course will be conducted in

### English

**MT - Marine Technologies Pte, Ltd.**

**17D Tuas Road, Singapore—637817**

**Phone - (+65) 3106 4070**



# ***DP Basic Induction Course***



## **MINIMUM ENTRY QUALIFICATION REQUIREMENTS FOR THE DP TRAINING SCHEMES**

Following the 2010 Manila amendments to the STCW Convention and Code, The NI has implemented the following criteria for entry onto the DP Operators Training Scheme: The minimum qualification is set at STCW Regulation II/1 - II/2 - II/3 Deck, Regulation III/1 – III/2 – III/3 – III/6 Engine and Regulation III/6 for ETOs. Alternative appropriate marine vocational qualifications (MVQs) will be considered on a case by case basis. The Nautical Institute defines a MVQ as a non-STCW Certificate of Competency issued by a white list Maritime Administration for use in the administration's local waters only. If you are unsure about the eligibility of your license to enter onto the training scheme, it is advisable to contact The NI for clarification before joining or starting the Induction course.

**The Induction course involves both theory and practice on a simulated MT DP system and covers the following topics:**

- Principles of DP
- Elements of the DP system
- Practical operation of the DP system
- Position reference systems
- Environment sensors and ancillary equipment
- Power generation and supply and propulsion
- DP operations, setup procedure
- Planning using vessel and field info, contingency planning
- Checklists, worksite approach, communication, hand over

## **ONLINE EXAMINATION**

Every student is required to undertake an online assessment/exam at the training center after completing the Induction / Basic course.

The exam is composed of multiple-choice questions and shall be completed in 1 hour and 15 minutes. Students who fail the first attempt are allowed to have another two attempts within six months of the first attempt date; however, the second attempt must be undertaken within 24 hours of the first attempt in the same training center where the first was attempted. If the student fails these three initial attempts, he/she is required to repeat the Induction or Simulator course respectively and undertake another exam.

On successful completion of both the Induction course and Induction online exam, the trainee DPO will be issued with a NI DPO logbook in which the courses, DP sea time, tasks suitability statement are recorded.



# THE NAUTICAL INSTITUTE DYNAMIC POSITIONING SCHEME



**Phase A:** DP Induction course + online examination

**Phase B:** A minimum of 60 DP sea time days AND completion of task section onboard a certified DP class vessel\* + Company confirmation letter  
  
\*(see section: **CALCULATION OF DP SEA TIME TO ISSUE A LIMITED OR UNLIMITED CERTIFICATE IN CERTIFICATION SCHEME**)

**Phase C:** DP Simulator course + online examination

**Phase D:** A minimum of 60 DP sea time days onboard a certified class 1 DP vessel

If completed, a one week Sea Time Reduction course is counted as 30 days DP sea time and will reduce 30 days of Phase D

**Phase D:** A minimum of 60 DP sea time days onboard a certified class 2 or 3 DP vessel

**Phase E:** Statement of Suitability signed off by Master of last DP vessel + Company confirmation letter

**Phase E:** Statement of Suitability signed off by Master of last DP vessel + Company confirmation letter

Complete online DP application and send documents to the NI office

Complete online DP application and send documents to the NI office



Applicant must rejoin above process as instructed by NI

NI assesses and verifies documents. Everything ok?

NI assesses and verifies documents. Everything ok?

Applicant must rejoin above process as instructed by NI

**LIMITED CERTIFICATE**

Upgrade from Limited to Unlimited DP certificate: minimum of 60 DP sea time days onboard certified class 2/3 DP vessel + Statement of Suitability signed by Master in the last vessel + Company confirmation letter are required before submitting documents to the NI.

**UNLIMITED CERTIFICATE**

## Singapore

MT - Marine Technologies Pte, Ltd

17D Tuas Road

Singapore 637817

Phone: +65 3106 4070

Email: [contact-singapore@marine-technologies.sg](mailto:contact-singapore@marine-technologies.sg)

## Norway

Marine Technologies, LLC

Hovlandsveien 44

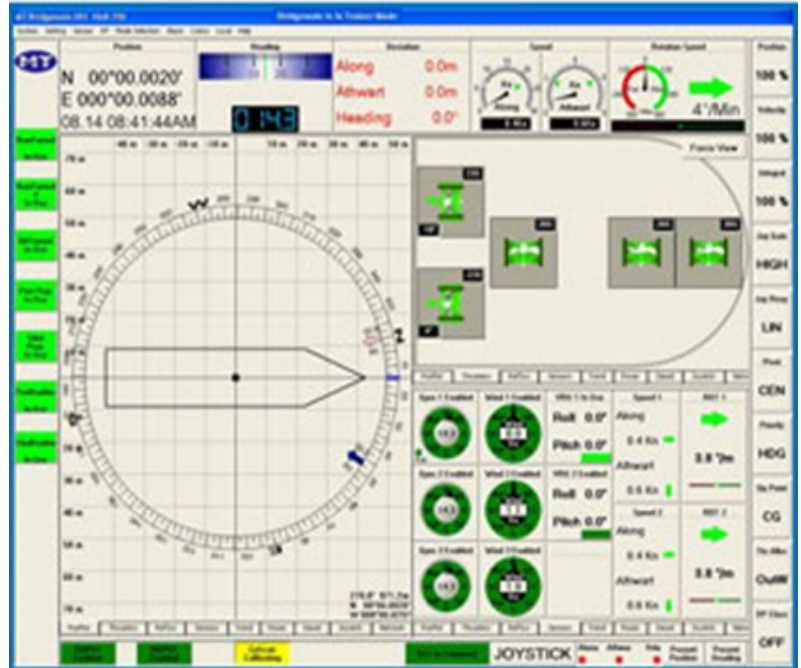
4370 Egersund

Norway

Phone: +47 51 46 18 66

Email: [contact-norway@mtllc.us](mailto:contact-norway@mtllc.us)





## Singapore



MT - Marine Technologies Pte, Ltd  
17D Tuas Road  
Singapore 637817  
Phone: +65 3106 4070  
Email: [contact-singapore@marine-technologies.sg](mailto:contact-singapore@marine-technologies.sg)

## Norway



Marine Technologies, LLC  
Hovlandsveien 44  
4370 Egersund  
Norway  
Phone: +47 51 46 18 66  
Email: [contact-norway@mtllc.us](mailto:contact-norway@mtllc.us)