

Health, Safety, and Environmental Orientation

for Guests, Partners, and Contractors



SPINNING ENERGY



MARINE TECHNOLOGIES



Welcome to Marine Technologies and Spinning Energy!

Thank you for visiting!

Here at MT & SE, we strive to provide a pleasant, safe, and productive environment for our guests, partners and contractors. In order to do so, we ask that you take a few minutes to familiarize yourself with our safety and environmental policies.

Should you wish to learn any more about these policies and procedures, we are happy to provide you with a full copy of our QHSE manual.

We hope that you enjoy your visit to our facilities. Please let us know if there is anything we can do to further improve your experience here.



Sveinung Tollefsen
General Manager
Marine Technologies



Line M. Bjørnemo
Plant Manager
Spinning Energy

General Policies

Security: Please obtain approval before entering offices and production areas.

Safety: Your host is responsible for providing a safety orientation appropriate to your visit. For your safety, please inform your host of your whereabouts during the stay.

Personal Protective Equipment: Please do not leave the designated walkways on our shop floor without proper footwear. The minimum protection is static-dissipating and steel-toed shoes are preferred.

Recycling: Containers for residual waste and organic waste are located in each kitchen. Containers for paper and plastic are located in each copy room. In the production area there is allocated special containers for electrical- and metallic disposal, in addition to waste, plastic and paper/cardboard.

Accident, Illness or near miss: All accidents, illness, or incidents must be reported to your host.

Evacuation: In the event of an emergency the alarm will go off and emergency lights in the ceiling will show you the nearest escape route. There are two stair towers in the building that both are approved escape routes.

Smoking: Smoking is only allowed in designated areas outside the building.

Canteen: Located on 6th floor, opening hours from 11.00 to 12.30.

Health, Safety, Security and Environment

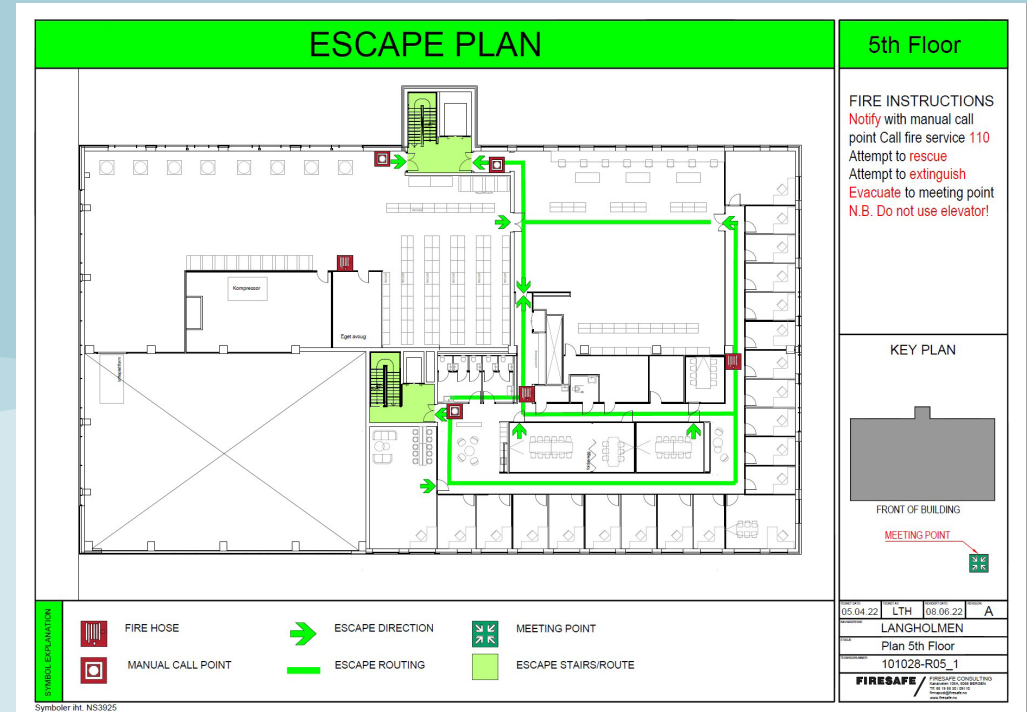
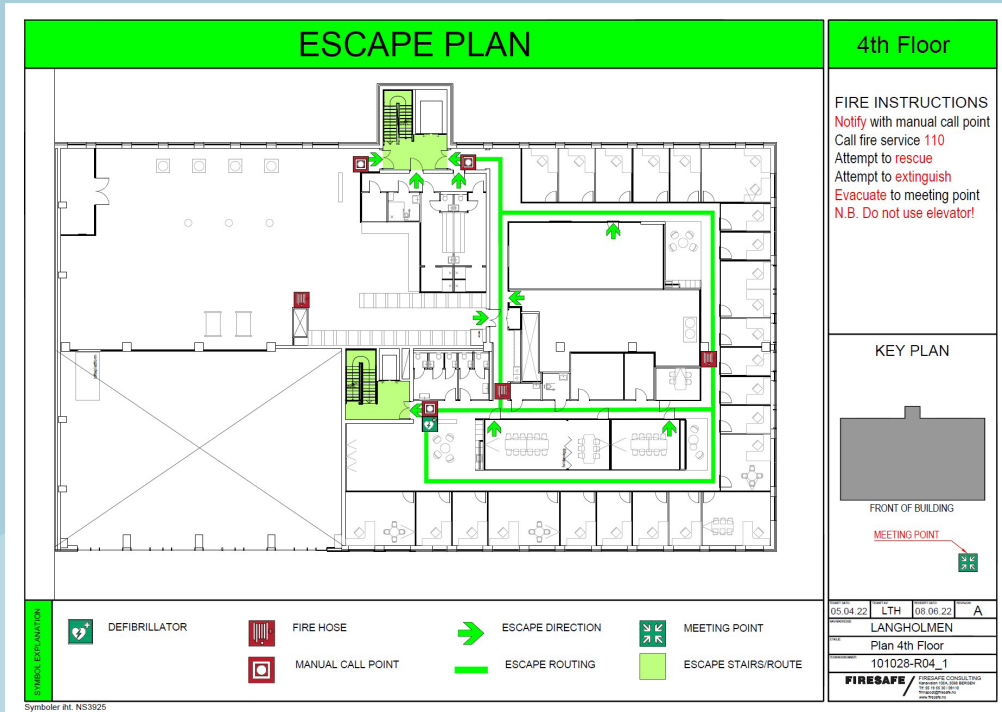
MT & SE has implemented a dynamic Health, Safety and Environmental Management System based on the continual improvement process of the Plan-Do-Check-Act cycle.

Health, Safety and Environmental Goals

- ◆ Zero accidents and environmental incidents
- ◆ Reduction of greenhouse gas emissions using remote support instead of travel.
- ◆ Reduction of residual waste.

We will achieve our goals by conducting business in a manner which protects public and occupational health, the environment, and employee safety, complying with all HSE laws, regulations, and other requirements, and promoting responsible management of products and processes to our employees, suppliers, customers, contractors, and partners.

Escape Plan



Contact Info

Address

Langholmveien 6
 4373 Egersund

Spinning Energy AS

Tel: +47 958 07 837
 spinningenergy.com

Marine Technologies LLC

Tel: +47 51 46 18 66
 marine-technologies.com